

SURFKOAT

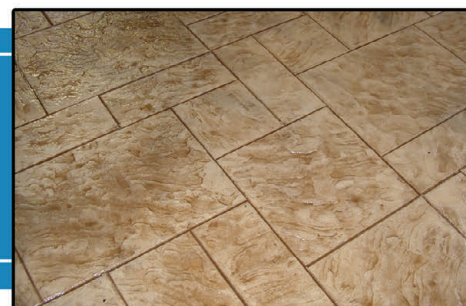
Surface Koatings, Inc.
Manufacturers of Industrial and Decorative Concrete Materials

Technical Data Sheet

STAMP SEAL CONCENTRATE

concentrated 50% solids pure acrylic resin

DECORATIVE CONCRETE SEALERS



Stamp Seal Concentrate is a concentrated, 50% solids pure acrylic resin that can be diluted with solvents such as; Aromatic 100 up to 1:1 by volume. Stamp Seal Concentrate provides a non-yellowing sealer with varied gloss depending upon dilution rate. Stamp Seal Concentrate offers improved resistance to rain, the sun, freezing temperatures, stains, and other pollutants that sometimes can be hazardous to concrete. Stamp Seal Concentrate gives the user freedom to choose desired finish.

Key Features & Typical Benefits

- Concentrated formula reduces shipping costs and provides the end user with multiple options for a customized formulation and finish.
- Excellent penetration and adhesion to clean, unsealed new or old concrete.
- Non-Yellowing, extremely durable pure acrylic.
- Can be applied as a reseal over previously sealed concrete surfaces previously sealed with pure acrylic sealers (test for compatibility first).

Recommended Applications

Effective on applications such as...

- Stamped Concrete
- Stenciled Concrete
- Acid Stained Concrete
- Overlaid/Microtopped Concrete
- Exposed Aggregate Concrete
- Smooth Trowel Concrete
- Broom Finish Concrete
- Most other new or existing concrete surfaces where water damage resistance is required.

Specifications / Compliances

- Dried coating is USDA accepted

Typical Properties & Technical Information

PROPERTY	VALUE
Solids/Active Content, Percentage by weight	50% +/- 1%
Dry Time - Tack Free	Depends on dilution rate / solvent used
Dry Time - Foot Traffic	Depends on dilution rate / solvent used
Dry Time - Heavy Traffic	24 hours - 48 hours
Re-Coat Time Window	Depends on dilution rate / solvent used
Application Temperature	50° F - 80° F
VOC (Volatile Organic Compound) Content	Less Than 700 gram/Liter
Appearance - Wet	Clear (May show slight haze)
Appearance - Dry	Depends on dilution rate / solvent used

Information above is based on lab temperatures of 70° - 72°F at 50% RH. Using this product outside these conditions may affect the accuracy of the information above. Always test prior to use!

ALWAYS REFER TO SDS & READ FULL TECH DATA SHEET AND WARRANTY INFORMATION PRIOR TO USE.

FOR PROFESSIONAL USE ONLY

Surface Koatings, Inc.
134 Davis St. • Portland, TN 37148
P: (615) 323-9461 • F: (615) 323-9816
url: www.surfkoat.com

Stamp Seal Concentrate

Application Instructions

SURFACE PREP: Concrete surface must be clean and free of all contaminants and water. Do not apply if rain is forecast within 24 hours. If moisture is present or if the surface is not clean and free of all contaminants, the sealer may have white spots and have premature delamination and failure.

Substrate and air temperature must be no less than 40° F and not exceed 80° F. If applied outside these limits the sealer may not achieve adequate film formation and may have excessive air entrapment, bubbles, blushing or hazing. Note that in direct sunlight, substrate temperature can exceed 150° F which can cause extreme bubbling issues. Low VOC solvent based sealers dry faster than traditional 700 VOC sealers. Apply on cool, overcast days to avoid issues. Do not apply if the temperature is expected to achieve 85° F or higher.

MIXING: Reduce with Aromatic 100 up to 1:1 by volume to reduce the solids content to the desired range and slowly mix well for 3 - 5 minutes before using. Allow product to sit for 5 - 10 minutes if too much air is induced during the mixing process and slowly stir with a paddle to release entrapped air before applying. Material may separate during long term storage so mix before next usage. Please contact Surface Koatings, Inc. if you require more information.

Be aware that it is unlawful to use this product if the finished material is intended to be used in a state restricted by OTC, CARB, or LADCO regulations. Surface Koatings is not liable for improper dilution.

COVERAGE RATE: *First Coat* : 250 - 350 ft² per gallon* (@ 25% solids) *Optional Second Coat* : 350 - 400 ft² per gallon* (@ 25% solids)

*Coverage rates may vary depending upon surface porosity, texture, application method and prior sealer application. Excessive build up should be avoided.

Coverage rates, dry times, final VOC content, odor, finished appearance, and available application techniques will vary depending on the solvent used in dilution and the dilution rate. Please use caution and review SDS for all products used prior to application.

APPLICATION: Apply the finished diluted product using a 3/8" – 1/2" nap roller cover using long even uniform strokes at approximately 250-400 (@ 25% solids) square feet per gallon depending on porosity and texture of substrate. A Chapin style solvent resistant sprayer may be used if diluted to a low enough solids content. Do not allow to Puddle! Thick or puddle areas may prevent the solvent from evaporating and may be susceptible to moisture intrusion which may cause milky white spots. Applying too thin may cause sealer to prematurely delaminate, flake or wear away. Allow sealer to dry for 24 hours for light traffic and at least 48 hours for heavy traffic. If applying two coats, wait approximately 4 – 6 hours between coats.

FOR PERSONAL PROTECTION USE GLOVES, GOGGLES, AND RESPIRATORS.

PLEASE NOTE: It is always recommended to test the product in a small, inconspicuous area (on the same concrete substrate) for desired results prior to application. Coverage rates may vary for all coatings and substrates depending on porosity, density, texture etc. When applying, do not exceed 400 sq. ft. per gallon. Applying too thin of a coating may cause inadequate film formation or performance expectations may be limited. **DO NOT USE ON BRICK.**

Precautions and Limitations

- This product will not freeze during storage, however, allow temperature to rise to 50°F prior to application.
- All HVAC ventilation ducts should be somehow blocked prior to application so solvent fumes are not distributed.
- If using indoor, use proper ventilation while applying and for hours after application to ensure fumes are removed.
- It is not recommended to apply product over carpet, tile, or other types of floor adhesives.
- This product performs best when applied as one or two medium-light coats, not one heavy coat.
- Please be aware that this product when cured may be slippery when wet. An anti-slip additive, such as Surf-Grip, can be added to reduce slip hazards.
- This product is not resistant to brake fluid, gasoline, and many similar products.
- This product may darken the surface of many new and existing concrete slabs. Test prior to use.
- Solvent vapors are heavier than air and may travel along the ground or may be moved by ventilation and ignited by pilot lights, other flames, sparks, heaters, smoking, electric motors, static discharge, or other ignition source locations distant from material handling point.

CLEAN-UP: Use xylene. Dispose of containers in accordance with local, state and federal regulations.

PRODUCT REMOVAL: Dried, cured sealer may be removed with a commercial paint stripper, such as *Nock-Off* or by using a diamond grinding method, sandblasting method or similar mechanical action.

SHELF LIFE: Up to one year from manufacture date in its original, unopened container stored at room temperature.

PACKAGING: Available in 1 gallon, 5 gallon and 55 gallon containers.

Always read all technical information, label and SDS prior to use. This information can be found online or by calling customer service at the number below.